

Technical Parameters

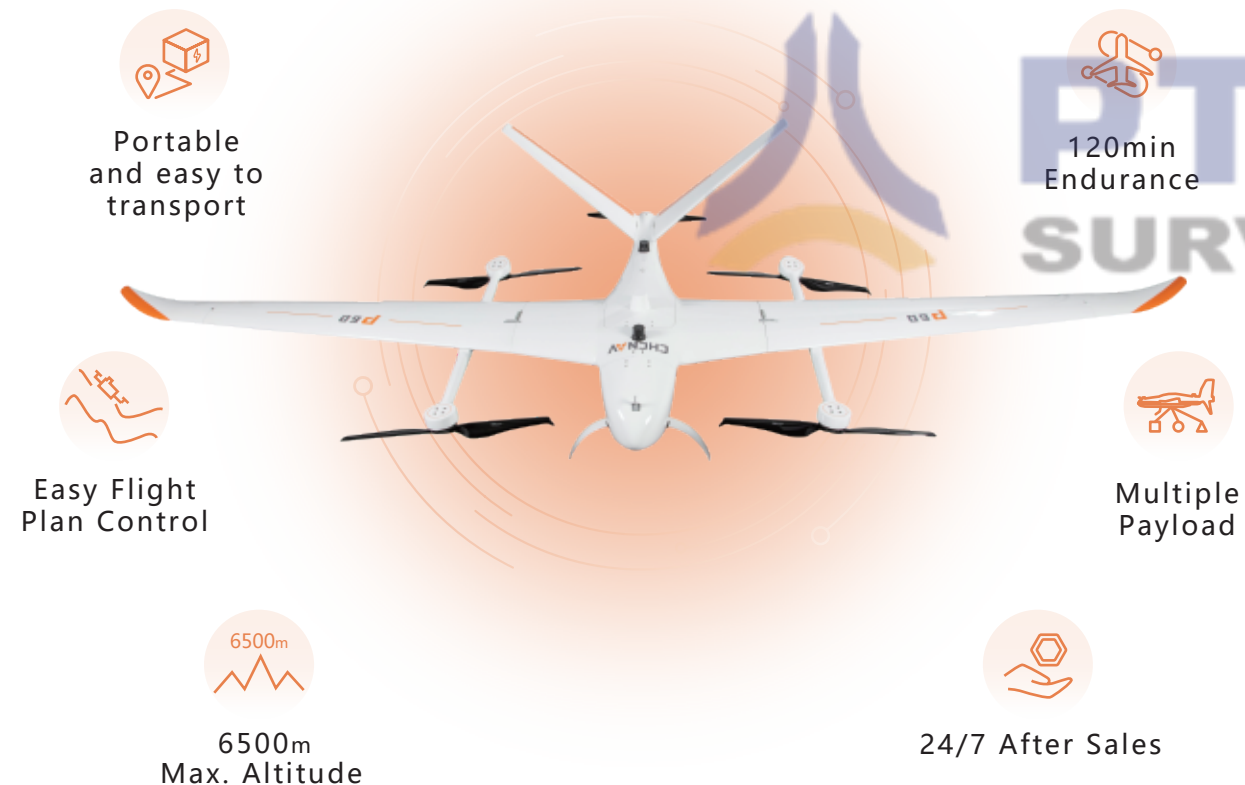
Material	Aerospace Composite
Width	4.2m
Length	1.6m
Carrier Box Size	1.66m*0.96m*0.55m
Engine	Full Electric
Number of Rotors	4+1
Max. Take Off Weight	25kg
Max. Payload Weight	6kg
Endurance	120min (with 3kg of Payload)
Cruise Speed	19m/s
Differential Frequency	100Hz
Positioning Accuracy	Horizontal: ±1cm+1ppm; Vertical: ±2cm+1ppm
Cruise Height	50-200m
Maximum Altitude	6500m
Wind Resistance	Level 6
Operating Temperature	-20℃-50℃
Telemetry Range	Altitude 300m≥20km; Altitude 500m≥30km
Flight Plan	Support
Assembly Time	≤10min
Disassembly Time	≤10min
ADS-B	Support
Cloud Service	Support



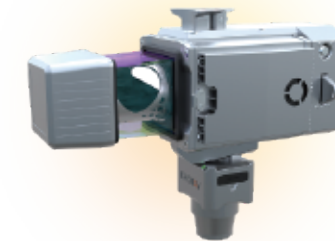
P60 Unmanned Aerial Vehicle

P60 electric vertical take-off and landing fixed wing UAV aerial survey system is a new generation of large-load and long-endurance UAV. Designed for easy to use and highly integrated with self-developed payloads, making field operation easier.

Features



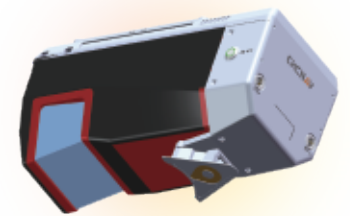
Payloads



AU20



AU1300



AA1400



AA2400



ixm-100



C5

With 3kg of Payload, 120min Endurance

4.2m

Width

19m/s

Cruise Speed

10km²

Area Coverage in
Single Flight

AU20

Payload



Easy to Use

One button operation to follow route according terrain to ensure flight safety.



Quick Assembly and Easy to Transport

1.66m*0.96m

Box Size

Fit in most SUV



Simple to assemble, no
need for additional tool



6500m Max. Altitude

Aerospace composite material capable for high altitude and low temperature operations.



24/7 After Sales Support

24/7 Support to ensure no technical difficulties unsolved and hinder survey operations.



Application Scenario

The P60 UAV can be widely used from urban planning, infrastructure monitoring, oil and gas, to mining service.



