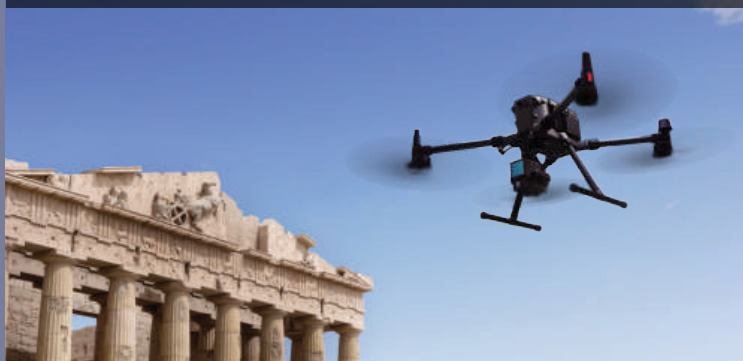




# MATRICE 350 RTK

Drone Multi Payload untuk Kebutuhan Industri

## LIDAR SURVEY & MAPPING



## COMPATIBLE WITH THIRD-PARTY TOOLS



## SECURITY & INSPECTION



## PORTABLE AND USER-FRIENDLY



## Powerful Operation Performance

- 55-Min Max Flight Time
- IP55 Rating
- -20° to 50° C (-4° to 122° F) Operating Temperature
- 7000m Max Flight Altitude
- 2.7kg Max Payload

## Intelligent Operation

- Centimeter-Level High-Precision Mapping Without GCPs
- AI Spot-Check for Automated Precision Inspection
- Cloud-based real-time situation sharing for air-to-ground coordination

## New Control Experience

- DJI RC Plus
- DJI Pilot 2

## Upgraded Battery System

- 400 Battery Cycles
- Battery Hot Swapping
- Battery Station Storage Mode/ Ready-to-Fly Mode
- 360° Movement Battery Station Wheels

## Improved Video Transmission

- 4 Antenna O3 Enterprise Transmission
- Triple-Channel 1080p Transmission

## Enhanced Flight Safety

- Arm Lock Indicator
- 6-Directional Sensing and Positioning
- Night-Vision FPV Camera
- CSM Radar Support

## Professional Payloads

Zenmuse H30T



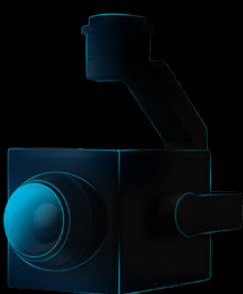
Zenmuse L2



Zenmuse P1

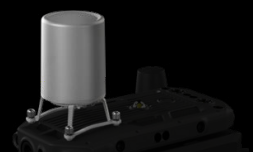


Third-Party Payload



## Extensive Accessories

CSM Radar



BS65 Intelligent Battery Station



TB65 Intelligent Flight Battery



Matrice 350 RTK 2112 High-Altitude Low-Noise

