



# A NEW WAY TO SCAN THE WORLD



**FJD Trion™ S1**  
3D LiDAR Scanner

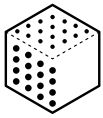


# A NEW WAY TO SCAN THE WORLD

A new way to "look" at the world around you.

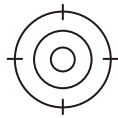
With 320,000 points per second, S1 catches high-quality scans hands down.

With industry-leading SLAM algorithm, S1 captures, processes, and displays accurate point clouds on the mobile terminal in real time.



**320,000**

Points Per Second



**0.8-2 cm**

Accuracy



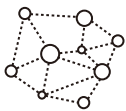
**16**

Sensors



**120 m**

Range



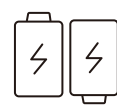
Real-Time  
Point Cloud



Indoor & Outdoor  
Scanning



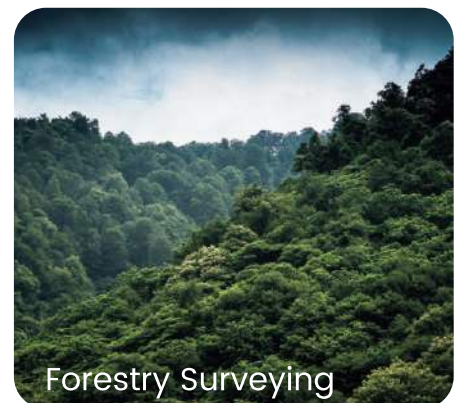
Lightweight  
and More Portable



Dual Battery  
Hot-Swappable

## APPLICATION SCENARIOS

Indoor, outdoor, and even underground without a GNSS receiver.

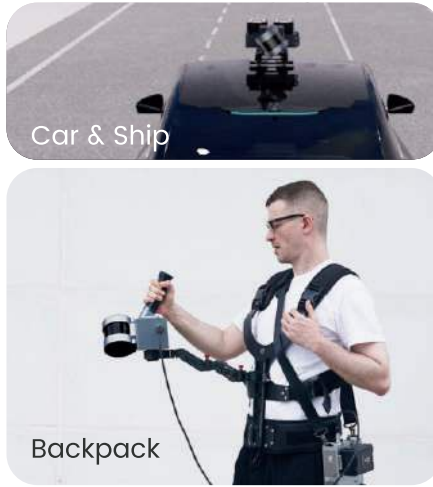
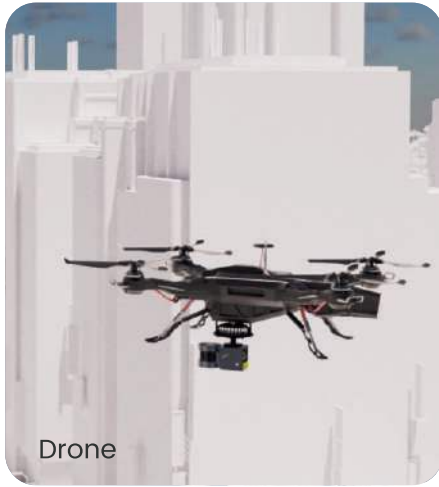




# AS VERSATILE AS IT IS PORTABLE

Lightweight design for easy portability.

Real-time point cloud display and SLAM processing.



## YOUR POINT CLOUD STUDIO



### TRION SCAN

#### Real-time Visualization of 3D Point Cloud Software

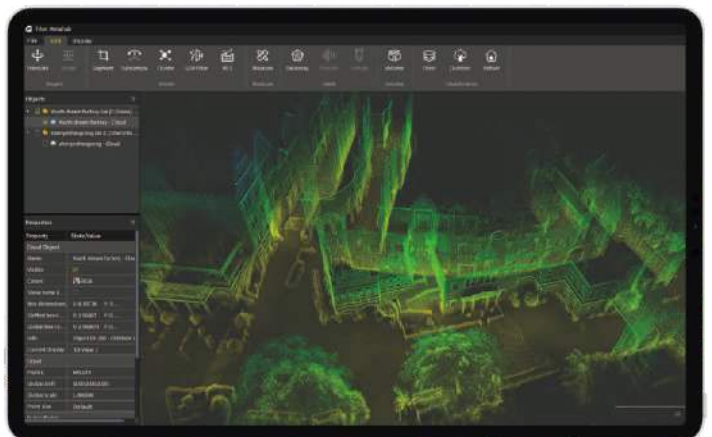
- Displays the scanned project files, storage capacity, and battery life
- Visualizes the point cloud in real time
- Tracks real-time path
- Manages and downloads project files

### TRION METAHUB

#### Point Cloud Post-Process Software

- Denoises and colorizes point clouds
- Stitches point clouds, maps shadow, transforms coordinates, and does automatic plane fitting
- Classifies point clouds, produces 2D drawings\*, and builds 3D models\*

\*Coming soon



# SPECS

---

## Range

120 m

## FOV

360°×270°

## Points per Second

320,000

## Display

Real-time preview on mobile terminal

## Datalogger Weight (incl. single battery)

2.2 kg

## Battery Life (Dual battery)

4 hours

## Ingress Protection

IP54

## Sensors

16

## Laser Class

Class 1/ $\lambda$  905 nm

## Accuracy

0.8 – 2 cm

## Processing

Real-time

## Carrier

Backpack or shoulder strap

## Scanner Weight

1.8 kg

## Storage Capacity

512 GB

---



Authorized Partner :



Jakarta   Semarang   Medan   Balikpapan  
Bandung   Surabaya   Makassar   Banjarmasin

Contact Us :

0813-8992-2189 / [surveying.div@asaba.id](mailto:surveying.div@asaba.id)

[www.asaba-surveying.id](http://www.asaba-surveying.id)

CREATE FOR A BETTER WORLD

Copyright © 2022 FJDynamics. All rights reserved.