

eScan M1

ANYWHERE YOU GO

The combination of zero-processing algorithms and anti-fuzzy technology balances speed and accuracy.

Industry-leading portability, breaking through the traditional device bulky limitations.

With "high efficiency, precision, lightweight and openness" as the core, it provides users with a full-process optimization experience from data collection to application landing.



LiDAR

Real Time Data

Zero processing after scanning, point cloud exported for immediate use.

True Natural Colored

Industrial-grade cameras equipped with advanced shutter technology eliminate motion blur.

Modular Design

The Type-C port supports the expansion of external devices such as panoramic cameras and RTKs.

Lightweight and Easy to Use

Weighing only 560g, the simple operation interface makes it quick to master the use of the device.



Product Specification

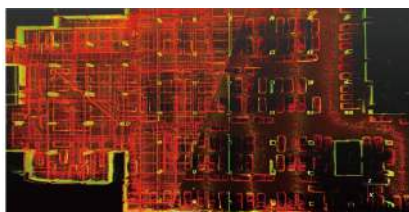
eScan M1

ANYWHERE YOU GO



	Standard
Range	40 m @ 10% reflectivity, 70 m @ 80% reflectivity
LiDAR channels	40
Points per second	200000
FOV	360°X59°
FOVLaser product classification	Level 1
Laser wavelength	905nm
Relative accuracy	2cm
Absolute accuracy	3-5cm
Point cloud thickness	1cm (no filter)
Data format	LAS, LAZ
Resolution	Dual Fisheye 5 Megapixel
camera lens	Global Shutter Camera

Dimensions(Main Unit	115 mm X 110 mm X 83 mm
battery capacity	5000mAh
Working time	1.5h
Storage	512G
Weight (no Better)	560 g



Garage



Garden



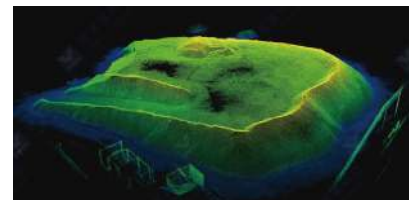
Architecture



Mine tunnel



Forestry



Volume calculation