



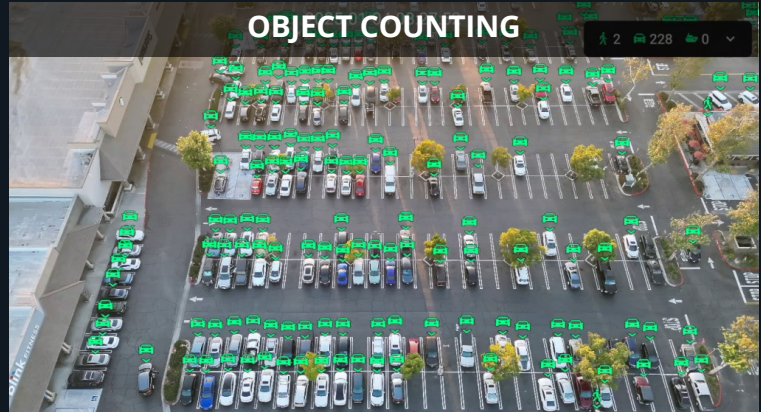
DJI MATRICE 4T

AI-Based Flagship Compact Drone for Security & Asset Inspection

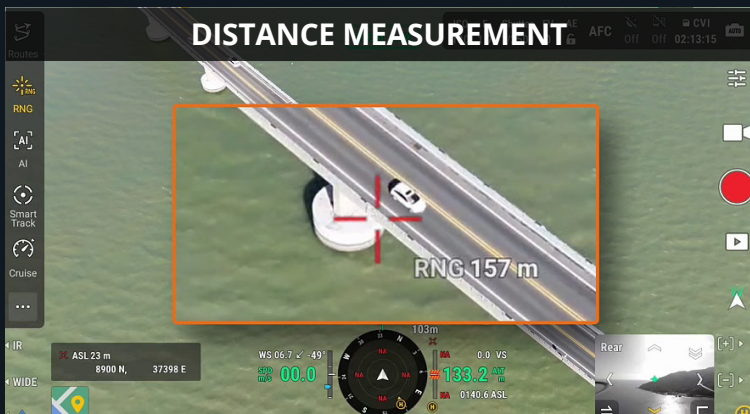
THERMAL & NIGHT SCENE MODE



OBJECT COUNTING



DISTANCE MEASUREMENT



FOREGROUND STABILIZATION





Matrice 4 Key Specs

Fast Take Off: 15s

Max Ascent Speed: 10 m/s *vs M3E 6 m/s **increased by 33%**

Max Descent Speed: 8 m/s *vs M3E 6 m/s **increased by 33%**

Max Forward Flight Speed: 21 m/s *vs M3E 15 m/s **increased by 40%**

O4 Enterprise Transmission: 25 km (FCC) / 12 km (CE) ***increased by 66%**

Max Forward Flight Time: Up to 49 min *vs M3E+RTK ***increased by 6 minutes**

Intelligent Operations With AI

- AI Detection: People, Vehicles, and Boat
Max. 128 objects (camera view), 1000 objects (single photo)
- Smart Track: Continuously track the selected object
- Distance Measurement with LRF: ASL & GPS Coordinates
- Point of Interest: Orbit around a selected pin point



Supports 3rd Party Models

Clear Vision with Multiple Sensors

Thermal Camera

640 x 512, f/1.0 53 mm equivalent focal length UHR Infrared Image, image resolutions up to 1280 x 1024

7x Tele Camera

1/1.5 CMOS, 48 MP Effective Pixels
f/2.8, Format Equivalent: 168 mm
pixels quantity increase by 4 times,
zoom capability increase by 2 times

Laser Range Finder

Measurement Range: 1800 m
Range Accuracy: $0.2 + 0.005 \times D$ (m)

3x Medium Tele Camera

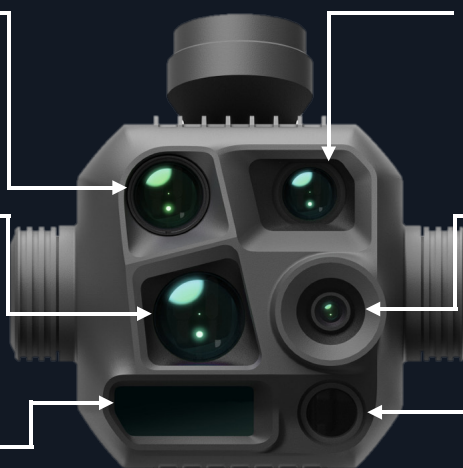
1/1.3 CMOS, 48 MP Effective Pixels
f/2.8, Format Equivalent: 70 mm

Wide-Angle Camera

1/1.3 CMOS, 48 MP Effective Pixels
f/1.7, Format Equivalent: 24 mm

NIR Auxiliary Light

FOV: 6°
Illumination Distance: 100 m | 328 ft



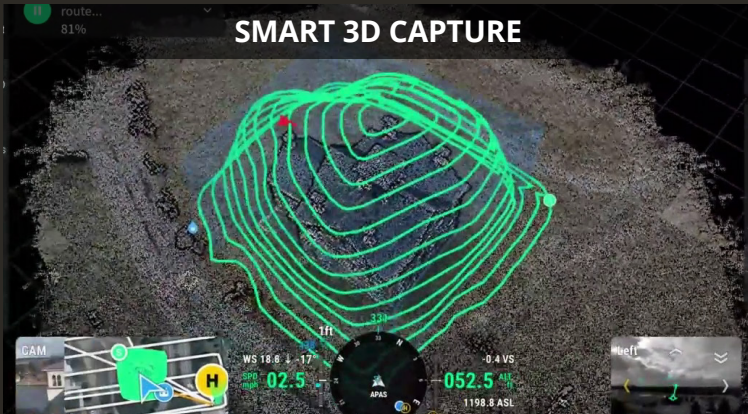
DJI MATRICE 4T



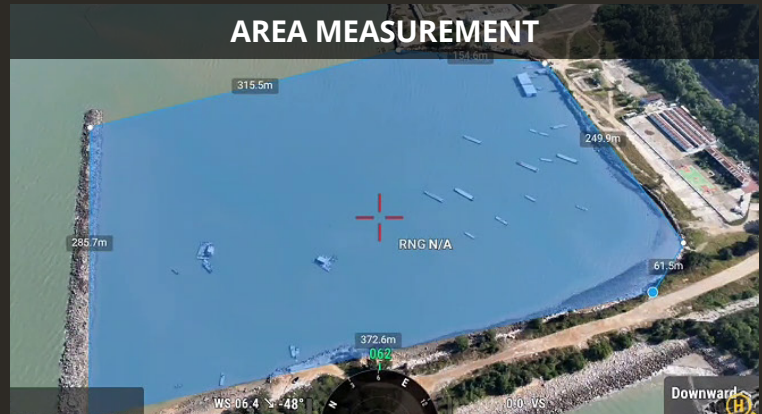
DJI MATRICE 4E

AI-Based Flagship Compact Drone for Survey & Mapping

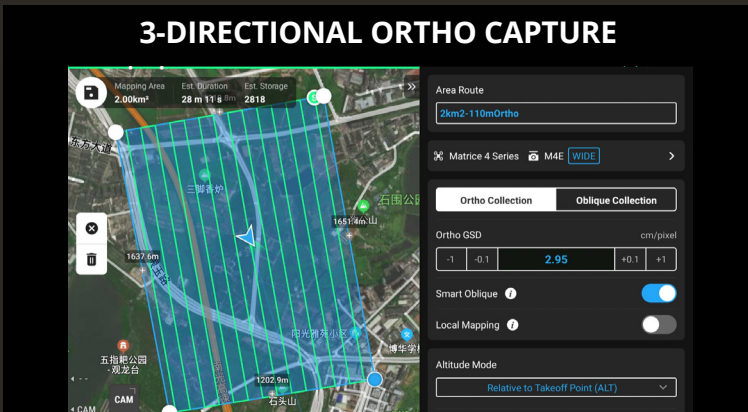
SMART 3D CAPTURE



AREA MEASUREMENT



3-DIRECTIONAL ORTHO CAPTURE



5-DIRECTIONAL OBLIQUE CAPTURE





Matrice 4 Key Specs

Fast Take Off: 15s

Max Ascent Speed: 10 m/s *vs M3E 6 m/s **increased by 33%**

Max Descent Speed: 8 m/s *vs M3E 6 m/s **increased by 33%**

Max Forward Flight Speed: 21 m/s *vs M3E 15 m/s **increased by 40%**

O4 Enterprise Transmission: 25 km (FCC) / 12 km (CE) ***increased by 66%**

Max Forward Flight Time: Up to 49 min *vs M3E+RTK ***increased by 6 minutes**

Multi-Directional Capture

- 3-Directional Ortho Capture
- 5-Directional Oblique Capture
- Smart 3D Capture
- Line & Area Drawing: Line (measure the distance), Polygon (calculate the area size)
- D-RTK 3 Multifunctional Station supports: **Relay, Base Station, and Rover Modes**



Faster Precision Mapping, Easier Inspections & Effortless 3D Capture

7x Tele Camera

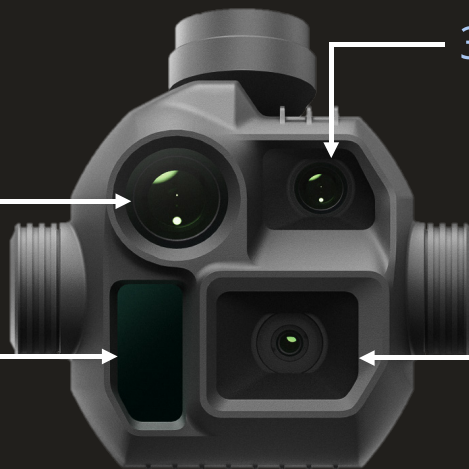
1/1.5 CMOS, 48 MP Effective Pixels
f/2.8, Format Equivalent: 168 mm
pixels quantity increase by 4 times,
zoom capability increase by 2 times

3x Medium Tele Camera

1/1.3 CMOS, 48 MP Effective Pixels
f/2.8, Format Equivalent: 70 mm

Laser Range Finder

Measurement Range: 1800m
Range Accuracy: $0.2 + 0.005 \times D$ (m)



Wide-Angle Camera

4/3 CMOS, 20 MP
f/2.8-f/11, Format Equivalent: 24 mm
0.5-Second Interval Shooting
Mechanical Shutter
In-camera distortion correction

DJI MATRICE 4E