



MAPTEK™



PT. ASABA  
SURVEYING SOLUTIONS



NS4

---

## Maptek NS4

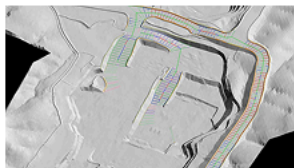
Smaller > Smarter > Connected





## Maptek NS4 Laser Scanner

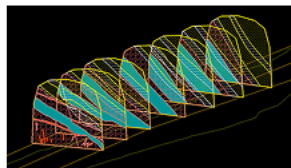
The NS4 is a compact, survey-grade laser scanner and image sensor built for accurate spatial data capture across underground mining, surface operations, tunnelling and civil environments.



### Built for

Collaborative surface, underground and civil workflows

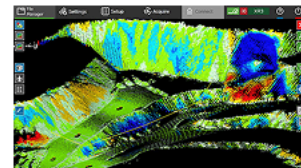
Portable, accurate scanning for tasks across mining, tunnelling, civil, BIM, engineering and forensics. One system across varied environments and survey tasks.



### Use for

Fast deployment and flexible capture

Low system weight, wide-angle acquisition and mobile-device control support easier repositioning, simpler operation and faster field progress.



### Delivers

Connected outputs for review and analysis

Capture data for volume reporting, geological interpretation, geotechnical assessment, engineering review and other downstream workflows with faster handoff between field and office.

## Features

- Suited for underground, surface, tunnelling and civil survey applications
- Long-range measurement with survey-grade data capture
- High-resolution imagery and positional tracking for richer field context
- Integrates with Maptek workflows for review, modelling and analysis
- Supports more connected delivery of field data across teams

## Benefits

- Compact and portable for efficient movement between scanning locations
- Wide 360 × 260° acquisition field of view for faster capture in complex environments
- Built-in LED illumination for underground, tunnelling and low-light workflows
- Mobile-device operation for more flexible field control
- Connected workflows that support faster handoff to office teams


**NS4**

Laser scanner for underground and above ground applications.  
Smaller, Smarter, Connected.



### General

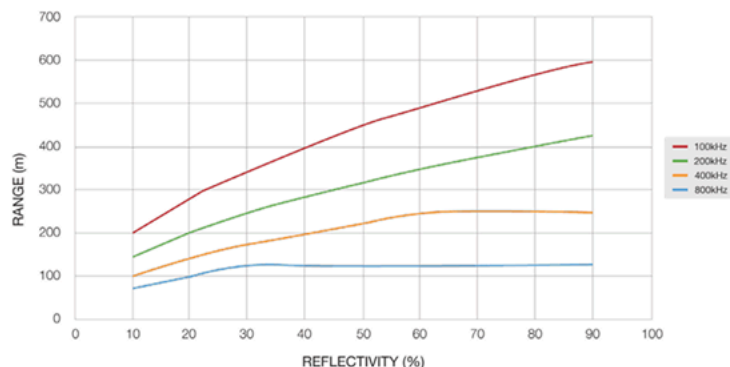
Size	242mm (H) x 222mm (W) x 170mm (D)
Weight	4.3kg, without battery (4.9kg with battery)
Battery	Interchangeable, Li-ion 2.0 hours operation
Fine levelling	Yes
Constant operating temp.	0 to +50°C (short exposure* -40° to +50°C)
Storage temp.	-40° to +70°C
Internal GNSS receiver	RTK receiver with corrections via external source
Protection class	IP65 (IEC 60529)
Data recorder	256 GB internal memory, external smart device connectivity
Mounting	Internal 5/8" UNC thread and T-bolt slots
Carry case	Customised case, optional backpack available

### Scanner

Maximum range <sup>†</sup>	1000m
Minimum range <sup>†</sup>	1m
Range accuracy <sup>‡</sup>	4mm
Repeatability <sup>‡</sup>	±4mm
Exit aperture	<8mm
Acquisition rate	100kHz 200kHz 400kHz 800kHz
Product laser class	Class 1 IEC60825-1:2014
Wavelength	Near IR
Angular scanning range	130° vertical (-40° to +90°) or 260° (over the top), 360° horizontal
Lighting	Front internal LEDs for underground scenes, 4x 8W at 1000lm

### Digital Camera

Type	20 MP CMOS HDR digital panoramic camera
Pixel resolution	70 MP
Angular range	130° vertical, 360° horizontal
Exposure control	User definable
Lens	Miniature 4K ultra-wide lens



\* Time to perform a 20 minute scan.  
<sup>†</sup> Firing at 100kHz for high resolution scans.  
 Based on returns from flat normal targets and good atmospheric conditions.  
<sup>‡</sup> Under Maptek test conditions at 65 metres.

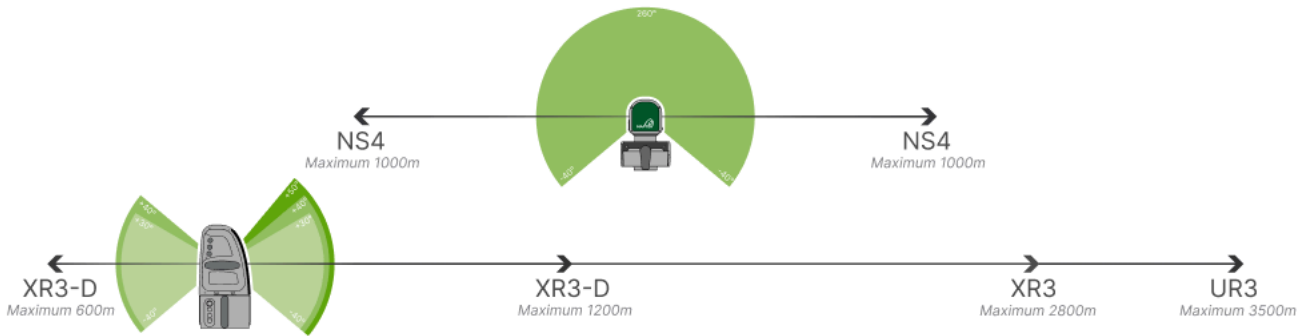
Information subject to change.  
 Correct at March 2026.



## Specification Comparison

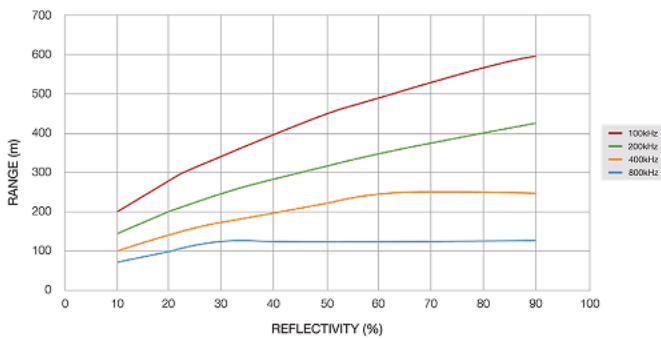
	NS4	UR3	XR3-C/CT	XR3-D/CD	SR3
<b>PHYSICAL</b>					
Weight	4.3 kg	12.1 kg	10.1 kg	10.3 kg	10.3 kg
Protection Class	IP65	IP65	IP65	IP65	IP65
Battery Runtime	2.0 hr Li-ion	2.0 hr Li-ion	2.0 hr Li-ion	2.0 hr Li-ion	2.0 hr Li-ion
Levelling System	-	20" fine	20" fine	20" fine	20" fine
Internal GNSS	-	L1 GPS + QZSS	L1 GPS + QZSS	L1 GPS + QZSS	L1 GPS + QZSS
<b>LASER PERFORMANCE</b>					
Max. Range	1000 m	3500 m	2800 m	1200 m	600 m
Min. Range	-	5 m	2.5 m	2.5 m	1 m
Accuracy	4 mm	5 mm	5 mm	5 mm	4 mm
Max. Acq. Rate (Ultra)	800 kHz	320 kHz	400kHz	400 kHz	400 kHz
Dual Pulse Mode	-	-	-	Yes	-
<b>SCAN COVERAGE</b>					
Horizontal Range	360°	360°	360°	360°	360°
Upper Elevation	+40°	+40°	+50°	+60°	+90°
Total Vertical Extent	260°	80°	90°	100°	130°
<b>CAMERA</b>					
Camera Type	20 MP CMOS HDR Panoramic (all models)				
Panorama Resolution	70 MP HDR	147 MP	147 MP	147 MP	147 MP
Vertical Camera FOV	-	60°	60°	60°	60°
<b>SPECIAL FEATURES</b>					
Built-in LED Illumination	4000 lm	-	-	-	-
Integrated Telescope	-	-	XR3-CT only	-	-
Laser Aimer	-	-	-	-	635 nm
Controller	Mobile (Android/iOS)		Ruggedised wireless tablet		

NS4	UR3	XR3-C/CT	XR3-D/CD	SR3
Compact & portable. Best for short-range, underground, or mobile scanning with built-in lighting.	Maximum range (3,500 m). Ideal for large open-pit surveys and long-distance surface mapping.	Only model with integrated 14x telescope for precision target sighting and survey-grade work.	Dual-pulse capability for better performance in dusty or particulate-heavy environments.	Widest vertical FOV (+90°). Purpose-built for underground tunnels, voids, and cavity scanning.

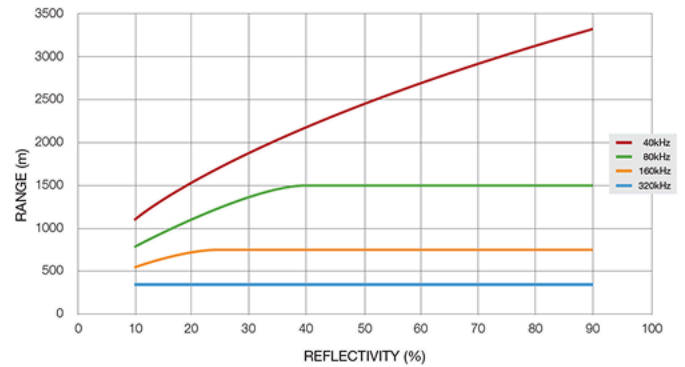


## Range versus Reflectivity

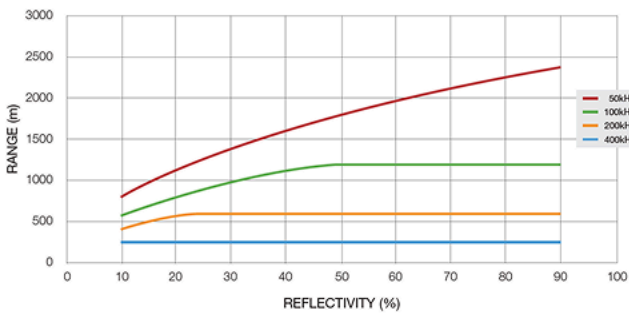
### NS4



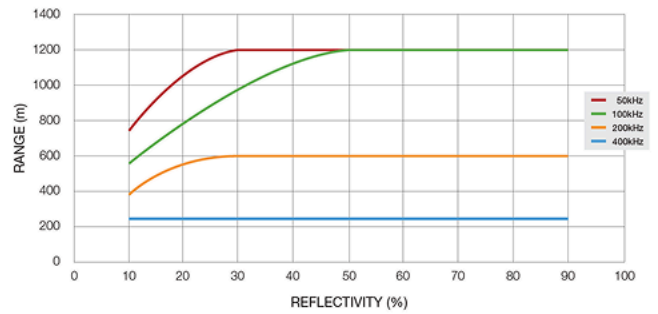
### UR3



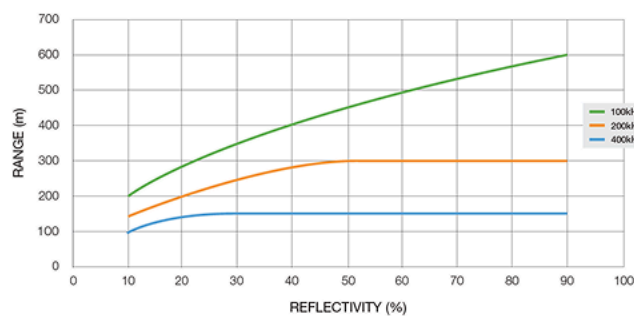
### XR3-C/CT



### XR3-D/CD



### SR3





Maptek, Vulcan, I-Site, BlastLogic, Eureka, PerfectDig, Evolution, Sentry, CaveLogic, PointStudio and the stylised Maptek M are registered and unregistered trademarks of Maptek Pty Ltd;

© 2026 Maptek 1118  
Maptek R3 Overview

Authorized Distributor:



Jl. Ir. H. Juanda No. 7 Gambir,  
Jakarta Pusat 10120  
Telp. +6221.80664499  
mktg\_surveying@asaba.id  
www.asaba-surveying.id